

# GEORGIA MUSIC TEACHERS ASSOCIATION

## FALL NEWSLETTER 2009

AFFILIATED WITH MUSIC TEACHERS NATIONAL ASSOCIATION

GMTA FALL  
CONFERENCE  
2009 ISSUE  
ROME | GA

## IN THIS ISSUE

- 1 GMTA CONFERENCE

---

- 2 FROM THE PRESIDENT

---

- 3 GMTA AUDITIONS

---

- 4 CERTIFICATION

---

- 5 GMTA 2009 CONFERENCE SCHEDULE

---

- 6 MEMBERSHIP

---

- 7 GMTA CONFERENCE REGISTRATION FORM

---

- 8 GMTA CONFERENCE DIRECTIONS AND LODGING INFORMATION

---

- 9 GMTA NEWS

---

- 10 MTNA COMPETITIONS

---

- 10 MTNA FOUNDATION

---

- 10 ARTS AWARENESS & ADVOCACY

---

- 10 GMTA THEORY

---

- 11 LOCAL ASSOCIATION REPORTS

---

- 11 GMTA CALENDAR

---

- 12 2010 GMTA CONFERENCE PRESENTERS FORM

---

- 13 GMTA ADVERTISING

---

- 20 GMTA FINANCE

---

- 22 GMTA EXECUTIVE BOARD

---

GMTA Headliners (clockwise from top):  
David Northington, Scott McBride Smith,  
Sorrel Hayes, and Penelope Bitzas



### 2009 GMTA CONFERENCE

Dawn Harmon McCord  
Vice President Program | GMTA

Do you have your calendar marked for the upcoming conference? Great! You will be glad you were there...so much to see and hear. Have you forgotten to reserve those dates? Read no further and get your calendar out now. Mark Nov. 5-7 for the GMTA Conference. Are you on the fence about going? I hope it's not a barbed wire fence but if it is, here are plenty of reasons to get off the fence *(continued on page 4)*



## FROM THE PRESIDENT

EDITH SWEATMAN  
PRESIDENT | GMTA

I hope you all have enjoyed your summer, “de-stressed” a little and now you are ready to begin a new year of teaching. As you plan your year, I hope that you have included time to attend our GMTA Conference at Shorter College in Rome. The dates are November 5 – 7. Dawn McCord, our VP/Programs, has spent many hours in preparation for this conference, along with Dr. Fred Tarrant, our coordinator at Shorter. It is going to be a great conference! This issue is filled with information regarding our headliners, sessions, recitals and hotel suggestions. As we plan for our students, it is also important to plan for ourselves. Come and be a part of our 2009 conference on the beautiful campus of Shorter College!

### CONFERENCE HEADLINERS

#### DR. DAVID NORTHINGTON

On Friday evening of our conference, David Northington will present an all-Copland program featuring major works as well as lesser-known works. He is presently recording all of Copland's piano works for a Centaur Records release a year from now. At his New York debut recital at Carnegie Recital Hall, the New York Times called David Northington “an immensely gifted musician...who combines the technical mastery of a virtuoso with the musical sensitivity of a poet.” Such critical accolades have followed Northington throughout the world in concerts and concerto engagements. His tours have included the United States, eastern and western Europe, Canada, China, and Russia. In addition to recitals and concerto engagements, he has given master classes at many of the leading conservatories in these countries.

David Northington's masterful pianism has won him first prizes in the Concert Artists Guild Competition, the East/West Artists Competition, the American Music Scholarship Association's International Competition, the unanimous Judges Prize at the Fourth Gina Bachauer International Piano Competition, and selection to the Artistic Ambassador Program sponsored by the United States Information Agency. As an Artistic Ambassador for the United States, Northington has toured extensively in France, Spain and Portugal. In addition to broadcasts throughout Europe on the Voice of America, he has filmed recitals in the historic Tallyrand Theatre in Paris for telecast on French National Television. Recently, Northington celebrated the international release of a compact disc featuring the waltzes of Chopin on the Centaur Records label. After this release, Dr. Northington was invited to perform solo recitals in the United States, Italy and Poland. Since receiving his degrees at the Cincinnati College-Conservatory of Music and the Yale University School of Music, David Northington has taught on the faculties of several universities. His many teaching awards include the Tennessee Music Teachers Association's Teacher of the Year Award and the Tennessee Governor's School of the Arts “Outstanding Teacher Award.” Dr. Northington has

also been the recipient of the Tennessee Arts Commission's Artist of the Year Award.

We look forward to an exciting recital on Friday evening and also to his insight as a teacher during the Saturday morning Master Class.

#### DR. SCOTT MCBRIDE SMITH

Pedagogue Scott McBride Smith of Irvine, California is President-Elect of the California Association of Professional Music Teachers and President of the International Institute for Young Musicians, an international summer music academy. He is an internationally recognized authority on piano teaching and co-author of the college text *The Well Tempered Keyboard Teacher*. Dr. Smith is Associate Editor of the magazine for early-level piano study *Clavier Companion*, and was Contributing Editor for the magazine *Piano & Keyboard*. His articles have appeared in *Piano Guild Notes* and *The American Music Teacher*. His most recent article is an interview with Lang Lang published in *Clavier Companion*. In a conversation with Dawn McCord, he conveyed how approachable this remarkably talented young adult is and how willing he is to share his experiences and joy of music making. As a teacher, McBride Smith continually prepares students for competitions with winners throughout the USA. Dr. Smith received his M.M. from the University of Kansas and his doctorate from the University of Southern California. He is a Past-President of the Southwest Division of the Music Teachers National Association, and a former member of the MTNA National Board. He is a member of the European Piano Teachers Association. A certified teacher of early childhood music, he is a member of the Early Childhood Music and Movement Association. Sessions selected for 2009 GMTA are: 1) Basic Pedagogy—Teaching Young Men: Some Advice from a Recovering Boy; 2) Piano Literature, Style and Performance—Gems from the Piano Teacher's Vault: Forgotten Pieces Overdue for Rediscovery; and, a showcase of his series, *American Popular Piano* distributed by the Hal Leonard Company. Smith's publisher is Novus Via Music.

#### SORREL HAYES

Sorrel Hays, born Doris Hays in Memphis earned her Master of Music degree at the University of Wisconsin in Madison. After teaching at Cornell College in Iowa, she moved to New York City to study contemporary keyboard music. In 1972, she won first prize at the Gaudeamus Competition for Interpreters of New Music in Rotterdam and began her international career as a performer of contemporary music. Hays has composed many works reflecting regional influence, including “Tunings” for string quartet, and an opera “The Glass Woman,” based on the life of eccentric glass collector Anna Houston, commissioned by the Chattanooga Opera and produced in New York in 1989

and 1993. More information about her projects may be found at [www.sorrelhays.com](http://www.sorrelhays.com). We look forward to hearing her commissioned work for GMTA at our conference.

Our Friday evening banquet will be held on the campus of Shorter College. Reservations for this banquet may be made ONLY by pre-registering for the conference on the Conference Registration Form which is included in this newsletter and also found on our web site. ([www.georgiamta.org](http://www.georgiamta.org)) Members of the Shorter Voice Faculty will present a mini-recital at our banquet!

#### NATS GUEST CLINICIAN PENELOPE BITZAS

Mezzo-soprano Penelope Bitzas has performed in a wide variety of musical genres including opera, contemporary music, solo recital, orchestral performances and Greek music. She has appeared as a soloist under such notable conductors as Kurt Masur, Seiji Ozawa, Gustav Meier, Luciano Berio, Richard Westenberg and George Tsontakis. She has concertized in the United States, Germany, Cyprus, Turkey and Venezuela. An enthusiast of new and Greek repertoire, she has premiered works at Alice Tully Hall, Merkin Hall, Jordan Hall and other venues. In the New England area, Ms. Bitzas has been a soloist with the Bangor Symphony Orchestra, ALEA III, Back Bay Chorale, Just in Time Players, the MIT Chorale and Orchestra, First Monday Concerts and Time's Arrow. Ms. Bitzas was a National Semi-Finalist in the Metropolitan Opera National Council Auditions, a member of the Minnesota Opera Studio and the New Music Ensemble at the Banff Centre and the Blossom Music festival. She was also a recipient of two fellowships to the Tanglewood Music Center.

Ms. Bitzas' students have been winners and finalists of numerous competitions including the Metropolitan Opera National Council Auditions, the George London Competition, the Jose Iturbi Competition, the Gerdna Lissner Foundation, Opera Index, the Reyfuss Competition, the Loren Zachary Competition, the MacAllister Awards, Joy in

Singing, the Montreal Competition and NATS. Many of her students have also sung roles and apprenticeships with New York City Opera, Florida Grand Opera, Opera Theater of St. Louis, Boston Lyric Opera, Opera Colorado, Santa Fe Opera, Des Moines Metro Opera, Sarasota Opera, Lake George Opera, Merola Opera Program, Seattle Opera, Minnesota Opera, Cincinnati Opera, Virginia Opera, and Glimmerglass Opera.

Ms. Bitzas is currently Associate Professor of Voice at Boston University. She has given master classes for the Master Teachers of Singing (Westminster Choir College), National Association of Teachers of Singing, Boston Chamber Ensemble, Longy School of Music and Opera Theater of St. Louis. She has been on the faculty of the Amalfi Coast Music Festival (Vietri sul Mare, Italy) and the Boston University Tanglewood Institute. Ms. Bitzas received her Bachelor of Music, magna cum laude, in Voice Performance and Music Education from Ithaca College, and her Masters of Music in Voice performance from the New England Conservatory of Music. She has been on the faculty of Boston University since 1993, having previously taught at Gustavus Adolphus College, Wagner College and Ithaca College. In 2007, she received the prestigious Metcalf Award, Boston University's highest honor for excellence in teaching.

Plan to attend our conference! Plan to be renewed through all that will be offered during these three days!

I hope that you will all have a wonderful year of teaching and learning. A quote that I found says "When we worry about what a child will be tomorrow, we sometimes forget that he is someone today." May that be a reminder for us as we teach, nurture and educate young musicians.

Thank you all for your work through GMTA. I hope to see you in November!



**GMTA AUDITIONS**  
REBEKAH JONES  
VICE PRESIDENT | AUDITIONS

We would like to thank Kennesaw State University for hosting the GMTA Auditions this year. I personally would like to extend a big thanks to all of the teachers, parents and students for their patience during our transition. This spring, we hope to have many improvements that will make everything run even more smoothly. I hope to see you all there again!



and make plans to attend the conference. The barbs are the reminders that we are a connectional community that need one another to keep us current with pedagogy issues, performance technique, and getting to know our music peers. The reasons to go this year include the many wonderful opportunities planned with your needs in mind. We have a recording artist, a published author, a pedagogue with a well-know piano series, and some of the best teachers in the state offering their expertise. Do you want to know more? Keep reading.

The 2009 GMTA Conference is on schedule with the support of Shorter College in Rome, Georgia, Nov. 5-7, 2009. David Northington will present an all-Copland concert and lead a master class. Scott McBride Smith will lead several pedagogy sessions with a focus on repertoire selection, teaching the male student, and his contemporary music piano method. Sorrel Hays is our commissioned composer. "Fanfare Cosmos" is a newly composed work for a chamber ensemble using themes from the TOOWHOPERA. Both works will be performed on Thursday evening. This pocket opera treats whimsically the ideas of love in space flight, proprietary air rights and cosmic flights of loneliness and lust. In addition to traditional instruments, the work will feature gamelan, an Indonesian ensemble composed mainly of tuned percussion instruments.

Varied performances are scheduled throughout the conference including our own awarding winning students, an

opera, theater music for our banquet, and vocal and piano features. New Orleans author, Craig Cortello, will open our conference with his experiences in the business world as presented in his newest book, *Everything We Needed to Know About Business, We Learned Playing Music*. The book is scheduled for release September 15. The book is a compilation of interviews with thirty-two business leaders who played music as children and view that experience as a defining one in preparing them for success. Cortello's session will highlight the nine lessons learned, attributes developed, and insights gained through the experience and personal accounts of the research participants.

All session presenters drawn from Georgia's best teachers have committed to their appointed time and their offerings feature a wide variety of learning opportunities and performances. Sessions include group and digital piano issues, vocal and piano repertoire, ornamentation technique, performer wellness, and certification. There are over 26 performers and presenters scheduled for this conference insuring something for everyone. Currently, I am looking for presidors to serve as session hosts in order to assure that presenters have site support as well as a warm welcome and thank you from a colleague. There are still openings for this job, ([dmccord@westga.edu](mailto:dmccord@westga.edu)) if anyone is interested. This conference should be an exciting event.

## CERTIFICATION

JAN ADAMS

CERTIFICATION CHAIR

Robin Engleman and I are excited about presenting a session about the old and new faces of certification at the GMTA Conference in November.

Beginning January 1, 2010, a new certification process known as Teacher Profile Project will be implemented. The certification exams and portfolio will end on December 31, 2009. If you choose to be certified under the old system, you must apply before December 31, 2009. **Applicants will still have two years from the time the application is accepted to take the certification exam and three months to complete their portfolio.**

Under the Teacher Profile, the process will include five projects:

- Writing your teaching philosophy
- Analysis of 4 teaching pieces
- Recordings of Studio Teaching
- Information about your Teaching Environment
- Discussion of Studio Policies and Business Ethics

These projects must be completed within one year of receipt of application. At the conference session, we will have a panel of NCTM teachers who have completed the process to discuss what is involved in becoming certified and to answer questions about the process **under the old system**. The **new** Teacher Profile Project is very practical, and I encourage all teachers who have considered certification to take that first step – apply for certification on the MTNA website and attend this session. **You are encouraged to attend the session first and then apply. This should help you make the decision to apply before December 31, 2009 or after.**

**THURSDAY, NOVEMBER 5, 2009**

12:30-4:30 PM	Registration Eubanks Room	8:30-9:10 AM	Scott McBride Smith Showcase American Popular Piano (Distributed by Hal Leonard Company) Brooks Chapel
12:30-4:30 PM	Exhibits Eubanks Room/Brooks Chapel Foyer	9:20-9:50 AM	To Trill or Not to Trill: The Question of Baroque Ornamentation Martha Thomas, University of Georgia Brooks Chapel
1:00-1:45 PM	Everything We Needed to Know About Business We Learned Playing Music Craig Cortello, Metairie, LA Brooks Chapel	9:20-9:50 AM	Developmental Repertoire for the Private Voice Studio Matt Hoch, Shorter College Evans Choral Room
1:55-2:40 PM	Four-Hands Bells, Nutcrackers, Dances and Sleigh Rides: Is There Something for Your Christmas Liszt? Kevin Hampton, Armstrong State University & Lyle Indergaard, Valdosta State University Brooks Chapel	10:00-10:30AM	Wellness and the Piano: A Teacher's Guide to Injury Awareness Elizabeth Chitwood, Hull Brooks Chapel
1:55-2:40 PM	Use the Digital Piano to Enhance Your Teaching Joe Camillo/Linda Sparks, Marietta Electronic Keyboard Room	10:00-10:30AM	Use the Digital Piano to Enhance Your Teaching Joe Camillo/Linda Sparks, Marietta Electronic Keyboard Room
3:00-4:15 PM	Basic Pedagogy—Teaching Young Men: Some Advice from a Recovering Boy Scott McBride Smith, Pedagogy Headliner Brooks Chapel	10:40-12:00PM	Piano Literature, Style and Performance--Gems from the Piano Teacher's Vault: Forgotten Pieces Overdue for Rediscovery Scott McBride Smith, Pedagogy Headliner Brooks Chapel
4:25-5:30 PM	GMTA/MTNA Competition Winners Recital Brooks Chapel	12:00-1:30 PM	Lunch (Box Lunch available by pre-purchase only---see registration form)
5:30-8:00 PM	Dinner on your own	1:00-4:30 PM	NATS Master Class Franklin Hall
8:00 PM	GMTA Recital featuring 2009 Instrumental Concerto Winner Sheehan Hanrahan 2009 Piano Concerto Winner Ye Jin Yi 2009 GMTA Commissioned Composition Sorrel Hays, Composer Brooks Chapel	1:30-2:00 PM	Video Games---In Your Home Studio? Jenny Bailey, Augusta Brooks Chapel
		2:10-2:50 PM	Got Certification? Robin Engleman/Jan Adams/Asheley Craig-Diaz/Yumi Patterson/Martha Thomas Brooks Chapel
		2:10-2:50 PM	The Swedish Tone: An Excursion Among the Jewels of Swedish Art Songs from the National Romantic Period Maria Lindberg-Kransmo/Debra Terning, John's Creek Evans Choral Room

**FRIDAY, NOVEMBER 6, 2009**

8:00 AM-4 PM	Registration Eubanks Room	3:00-3:45 PM	General Session Annual Business Meeting and President's Report Brooks Chapel
8:00 AM-4 PM	Exhibits Eubanks Room/Brooks Chapel Foyer		

4:10-5:00 PM	GMTA College Audition Winners' Recital Brooks Chapel	9:00-11:00 AM	GMTA Master Class David Northington, Conference Headliner University of Tennessee/Knoxville Brooks Chapel
5:45-7:30 PM	GMTA Evening Banquet Austin Moses Room Guest Musicians: Members of Shorter College Voice Faculty	9:00-12:00 PM	NATS Master Class Franklin Hall
8:00 PM	GMTA Conference Recital David Northington, Guest Artist Brooks Chapel	11:15-1:15 PM	GMTA Pre-College Winners' Recital Brooks Chapel
<b>SATURDAY, NOVEMBER 7, 2009</b>			
8:00-10:30 AM	Registration Eubanks Room	1:15 PM	GMTA Awards and MTNA Foundation Drawing Closing Remarks/Adjournment Brooks Chapel
8:00-12:30 AM	Exhibits Eubanks Room/Brooks Chapel Foyer	2:00 PM	Certification Testing



**MEMBERSHIP**  
**DONNA DASHER**  
VICE PRESIDENT | MEMBERSHIP

Now is a great time to introduce prospective members to your local and state associations. They could attend several meetings this spring, hear students in various student events or programs, and perhaps attend the state conference at the member rate. Getting them to join by September lets them experience an entire membership year.

Here are some suggestions which might work for your local association and your community:

- Advertise at local music stores.
- Advertise in local concert programs at schools, colleges, community cultural events.
- Consider radio and television announcements in your community.
- Contact those teachers advertising in local newspapers.
- Contact non-keyboard teachers who teach at music stores.
- Provide member rosters to all public school music educators, local libraries, Chamber of Commerce.
- Invite college students to meetings—they are the future teachers.
- Work with local colleges to provide opportunities for music students to help with student events, attend programs, serve as teacher aids in the studio.
- Invite non-members to participate in a community event, such as a workshop by an outstanding clinician.
- Contact prospective teachers more than once.
- Have an information table at dealer workshops and give a short presentation about MTNA if approved by the dealer and presenter.
- Consider a more flexible meeting time for those teachers who work during the day.
- Consider forms of "distance learning" for areas where communities are far apart.
- Keep business meetings short and to the point so there is time for member interaction and for a full program.
- Have the local newspaper publicize an article on an outstanding teacher and publicize all events.
- Create programs that impact all music teachers, not just piano teachers.
- Stress events for the average students, not just for the outstanding students.
- Develop events for students involved in composition, electronic keyboards, improvisation, etc.
- Provide website or e-mail information for those unable to attend meetings.
- Send representatives to other music association conferences to develop a relationship.
- Be involved in local community arts association.
- Support local arts events.

**Pre-Registration Postmark Deadline Date: October 16, 2009**

Name \_\_\_\_\_ Local Association or College Affiliation \_\_\_\_\_

Street Address \_\_\_\_\_ City, State, Zip \_\_\_\_\_

Do you hold GMTA/MTNA Certification? Yes \_\_\_\_\_ No \_\_\_\_\_ Type \_\_\_\_\_  
 Are you a new GMTA member? Yes \_\_\_\_\_ No \_\_\_\_\_  
 Is this your first GMTA conference? Yes \_\_\_\_\_ No \_\_\_\_\_  
 Current GMTA or Local Association Position Held \_\_\_\_\_  
*(please indicate if you are a former President of GMTA)*

Registration Fee:

\$80.00 GMTA member \_\_\_\_\_  
 \$85.00 Non-member fee \_\_\_\_\_  
 \$103.00 Husband/Wife (both must be GMTA members) \_\_\_\_\_  
 \$107.00 Member/Non-Member Spouse \_\_\_\_\_  
 FREE GMTA Student Members \_\_\_\_\_  
 \$15.00 Non-member Student fee \_\_\_\_\_

NOTE

There will be an extra \$5.00 charged for all registrations postmarked after October 16th. The above prices include admission to all conference activities, including Friday night's program. Pre-college students may attend conference student recitals and student master classes with their teacher, provided that the teacher is a GMTA member and registered conference attendee. Free conference registration is offered to host college faculty and students who are members of GMTA. The above prices do NOT include any Meal Functions. All fees (registration and meals) are non-refundable.

MEALS SOLD THROUGH PRE-REGISTRATION ONLY

**\$10.00 Friday: Box Lunch** (*Sandwiches, pasta salad, pound cake, drink*) \_\_\_\_\_

**\$25.00 Friday: Evening Banquet** \_\_\_\_\_

*(Prime Rib, Tossed Salad, Twice-Baked Potato, Green Beans, Hot Fudge Sundae Pie)*

**MAKE CHECKS PAYABLE TO: GMTA  
 MAIL THIS FORM (OR A COPY OF IT) WITH YOUR CHECK TO:  
 GMTA  
 Donna Trivette, Executive Director  
 956 Green Knoll Drive  
 Dacula, GA 30019**

**Total Amount Enclosed \$** \_\_\_\_\_

**Reminder: Postmark Deadline Date is October 16, 2009**

**Directions from Birmingham, Alabama (West)**

1. Merge onto I-59 N toward ATLANTA / GADSDEN. (55.8 miles)
2. Merge onto I-759 E / JOE FORD FWY via EXIT 182 toward GADSDEN. (4.9 miles)
3. Merge onto US-411 N / AL-25 E via EXIT 4B toward GADSDEN. (23.3 miles)
4. Turn LEFT onto US-411 / AL-68 / CLARENCE E CHESTNUT JR BYP. (2.2 miles)
5. Turn LEFT onto AL-68 / CEDAR BLUFF RD. Continue to follow AL-68. (5.4 miles)
6. Stay STRAIGHT to go onto AL-9. (9.2 miles)
7. AL-9 becomes GA-20. (16.3 miles)
8. End at 315 Shorter Ave Sw Rome, GA 30165-4267, US

**Directions from Atlanta, Georgia (South and East)**

1. Merge onto I-75 N / GA-401 N. (42.9 miles)
2. Take the GA-20 exit- EXIT 290- toward ROME / CANTON. (0.2 miles)
3. Turn SLIGHT LEFT to take the ramp toward ROME. (<0.1 miles)
4. Turn LEFT onto GA-20 W. (2.3 miles)
5. Turn SLIGHT RIGHT onto ramp. (0.1 miles)
6. Merge onto US-41 N / US-411 S / GA-3 N / GA-20 W. (2.8 miles)
7. Merge onto US-411 S / GA-20 W toward ROME. (18.9 miles)
8. Merge onto GA-20 W toward ROME. (4.0 miles)
9. End at 315 Shorter Ave Sw Rome, GA 30165-4267, US

**Directions from Chattanooga, Tennessee (North)**

1. Merge onto US-27 S.
2. Merge onto I-24 E via the exit on the LEFT toward ATLANTA / KNOXVILLE. (6.8 miles)
3. Merge onto I-75 S via EXIT 185A toward ATLANTA. (44.0 miles)
4. Take the GA-53 exit- EXIT 312- toward ROME / FAIRMOUNT. (0.1 miles)
5. Take the ramp toward ROME / CALHOUN. (0.1 miles)
6. Turn RIGHT onto GA-53 W. (22.6 miles)
7. Turn SLIGHT RIGHT onto GA-293 / BROAD ST. (0.1 miles)
8. Turn RIGHT onto US-27 / GA-1 / GA-20 / TURNER MCCALL BLVD NE. Continue to follow GA-20. (1.8 miles)
9. End at 315 Shorter Ave Sw Rome, GA 30165-4267, US

**2009 GMTA CONFERENCE LODGING INFORMATION**

Hawthorn Suites  
 100/110 West Second Avenue  
 Rome, GA 30160  
 706-378-4837  
 \$99.00 – 109.10 + tax  
 Reserve by October 6 for these rates

Holiday Inn Express & Suites  
 35 Hobson Way SE  
 Rome, GA 30161  
 Tel: 706-232-0021  
 \$95.00 - \$105.00 + tax  
 Reserve by October 5 for these rates

When reserving, mention that you are a member of Georgia Music Teachers Association to receive the discounted reservations.

Other hotels include Comfort Inn, Country Hearth Hotel & Country Inn and Suites. Information/prices for these and other hotels are available on the internet. (Rome, GA Hotels)



**IN SYMPATHY...**

GMTA and its membership wish to extend their deepest sympathies to Jean Mann and her family. Jean Mann's husband, Jim, passed away on Tuesday, August 11 following a recent illness. Please remember Jean and her children and grandchildren in your thoughts and prayers during this very difficult time.

**GMTA AUDITIONS**

Once again the GMTA Auditions will be held at Kennesaw State University in metro-Atlanta, with just two days of auditions. The 2010 GMTA Audition dates are:

- |                   |  |
|-------------------|--|
| March 15, 2010    | Deadline for all GMTA Auditions applications |
| April 16-17, 2010 | GMTA Auditions at Kennesaw State University  |

**MTNA CONFERENCE**  
**MARCH 20-24, 2010**  
**ALBUQUERQUE NEW MEXICO**  
FOR MORE INFORMATION GO TO [MTNA.ORG](http://MTNA.ORG)





## MTNA COMPETITIONS

PEGGY LEE  
VICE PRESIDENT | MTNA COMPETITIONS

The 2009-2010 GMTA/MTNA Student Competitions will be held at Shorter College in Rome, Georgia on November 2nd to November 5th. Detailed information about these competitions can be found in the August/September edition of *The American Music Teacher*. Applications can be obtained through the MTNA website at [mtna.org](http://mtna.org).

The application deadline is 12:00 midnight on September 15, 2009. Two important changes from last year are that the brass category in the Junior Performance Competitions has been eliminated and the piano concerto requirement for the Senior Piano Performance Competition has been discontinued.

If you have any questions, contact Peggy K. Lee, Vice President, GMTA/MTNA Competitions

## MTNA FOUNDATION

BECKY BRADLEY  
MTNA FOUNDATION CHAIR

### CONTRIBUTIONS:

During the First Quarter of 2009, the MTNA Foundation received contributions totaling \$1002.00 from Georgia members.

### ANNOUNCEMENTS:

Piano Works, Inc. will again furnish an artist's bench for the MTNA Foundation drawing at the conclusion of the GMTA Conference in November. Contributor's names will be entered in the drawing for each \$10 donation to the Foundation Fund.

## ARTS AWARENESS & ADVOCACY

DIANE BOYD  
GMTA ARTS AWARENESS & ADVOCACY CHAIR

The "Georgia's Own" List is a listing of Georgia presenters with the programs they are willing to present. GMTA is including this information on the website so that it is readily available to any chapter looking for a workshop.

We are in the process of updating our information for 2009-2010 and current information should now be on the website. You may join the list of presenters at any time. If you are interested in being a presenter and do not have the form, please contact me and I will send it to you. If you would like to have more information about the workshop(s) than is on the website, please contact me by e-mail ([dianelboyd@comcast.net](mailto:dianelboyd@comcast.net)) or phone (912-236-2356).



**THEORY**  
JASON BENNETT  
GMTA THEORY CHAIR

Participation in theory testing increased 12 percent this year. A total of 207 students participated with 76 percent scoring 90 or above. 20 students had a score of 100.

For next year, tests results will be returned earlier. Tests will be mailed out in January. March 15th will be the postmark deadline to return tests for grading. Results will be mailed by May 1st.

A theory refresher course will be offered as summer workshops to teachers/associations to aid teachers in preparing students for testing. Tests and mp3 files are available on the GMTA website to use as resources. All previous tests are now located on the GMTA web site.

**South Metro MTA**

Grace Caudle | President

SMAMTA has had a busy year with Music Day, a non-competitive festival held in November, a Sonata/Sonatina Festival Recital held in February, two Scholarship Auditions and the GMTA Auditions.

Our Program Meetings have included:

“How Shall I Phrase It?” by David Watkins

“Music Training of a Secure Somatic Foundation” by Dr. Kurt Alexander-Zeller

“Lecture Recital on Composer Cecile Chaminade and Her Duo Piano Music” by Luann Latzanich and Pam Martin

“A Handful of Strings” by Joseph Ensley

Also enjoyed were our social events, a covered dish luncheon with Marti Belles, a handbell program, and a Spring Luncheon.

**Northeast Georgia MTA**

Keith Defoor | President

Northeast Georgia Music Teachers Association

The Northeast Georgia Music Teachers Association met on August 7 at Brenau University to plan events for 2009-2010.

This fall, NEGMTA is holding a series of competitions in memory of long-time NEGMTA member Sue Morris. The Sue Morris Memorial Sonata and Sonatina Performance Competitions will be Saturday, October 24 at Brenau University.

The NEGMTA Local Spring Auditions will be held on Saturday, March 13 at Brenau University

**2009-2010 GMTA CALENDAR**

September 15, 2009	Deadline for GMTA/MTNA Competitions— All applications must be submitted ONLINE ONLY by midnight
October 15, 2009	GMTA Local Association of the Year Award application postmark deadline (Form: MTNA site) Send to Keith DeFoor
November 2-5, 2009	GMTA/MTNA Competitions at Shorter College, Rome, GA
November 5-7, 2009	GMTA Conference at Shorter College, Rome, GA
November 30, 2009	Deadline for articles to be included in winter issue of GMTA Newsletter
January 17-19, 2010	Southern Division Competitions; Samford University, Birmingham, ALA
March 15, 2010	Deadline for all GMTA Auditions applications
March 20-24, 2010	MTNA Conference, Albuquerque, New Mexico
April 16-17, 2010	GMTA Auditions at Kennesaw State University Local Association of Presidents/Executive Board Meeting
August 14, 2010	Local Association of Presidents/Executive Board meeting, Clayton State University
November 1-4, 2010	MTNA/GMTA Competitions @ Augusta State University
November 4-6, 2010	GMTA State Conference @ Augusta State University

**GMTA CONFERENCE PRESENTER PROPOSAL FORM**  
**GMTA CONFERENCE, AUGUSTA STATE UNIVERSITY, AUGUSTA, GEORGIA**  
**NOVEMBER 4 – 6, 2010**

*Proposals must arrive by March 1, 2010*

Please submit this form by March 1, 2010 to be considered for the 2010 GMTA Conference to be held at Augusta State University in Augusta on Thursday through Saturday, November 4 – 6. Note the sessions will be accepted for presentation only on Thursday afternoon, November 4<sup>th</sup>, and all day Friday, November 5<sup>th</sup>. Questions? Contact Dawn McCord at [dmccord@westga.edu](mailto:dmccord@westga.edu).

**NAME:** (as you wish it to appear in the program)

---

**ADDRESS:**

---

**CITY, STATE, ZIP CODE:**

---

**TELEPHONE:**

---

**EMAIL:**

**FAX:**

---

**TITLE OF PERFORMANCE/SESSION** (as you wish it to appear in the program)

---

**BRIEF DESCRIPTION OF PERFORMANCE/SESSION** (as you wish it to appear in the program)

---



---



---

**INSTRUMENTS, AUDIO-VISUAL EQUIPMENT NEEDED:** *Check all that apply.*

Piano \_\_\_\_\_ Overhead Projector \_\_\_\_\_ Lectern/Podium \_\_\_\_\_  
 PowerPoint \_\_\_\_\_ CD Player \_\_\_\_\_ Microphone \_\_\_\_\_ Music Stand \_\_\_\_\_  
 Other (describe in detail) \_\_\_\_\_

**SCHEDULING REQUESTS:** *Indicate 1<sup>st</sup>, 2<sup>nd</sup>, and 3<sup>rd</sup> choice:*

Thursday afternoon, Nov. 4 \_\_\_\_\_ Friday morning, November 5 \_\_\_\_\_  
 Friday afternoon, Nov. 6 \_\_\_\_\_  
 Conflicts, Days/Times to Avoid \_\_\_\_\_

**INCLUDE A DIGITAL, ELECTRONIC PHOTOGRAPH AND A 200 WORD PROFESSIONAL BIOGRAPHY**  
**Return by March 1, 2010 by email to [dmccord@westga.edu](mailto:dmccord@westga.edu) or to the attention of VP/Program:**

**Dr. Dawn McCord**  
**University of West Georgia**  
**1601 Maple Street**  
**Carrollton, GA 30118**





*Hugh Hodgson*  
**SCHOOL OF MUSIC**  
 The University of Georgia

**Saturday,  
 February 20, 2010**

The Piano Pedagogy Symposium is free and open to the public. A lunch, available for \$10.00, must be pre-ordered by February 16<sup>th</sup>. For more information, please contact Dr. Peter Jutras at [pjutras@uga.edu](mailto:pjutras@uga.edu).

**COMING EVENT**  
**February 17-19, 2011**  
 The University of Georgia proudly hosts the American Liszt Society Festival celebrating the **BICENTENNIAL OF FRANZ LISZT**.

**PIANO PEDAGOGY SYMPOSIUM**



**Robert Duke**  
 Author of *Intelligent Music Teaching*

**Saturday,  
 February 20, 2010**

**Edge Recital Hall  
 10:30-4:00**



**Martha Hilley**  
 Author of *Piano for the Developing Musician*

**Presenters**

Two leaders in the field of piano pedagogy from the University of Texas

**Audition, scholarship, and assistantship information:**  
[www.music.uga.edu](http://www.music.uga.edu) 706.542.3737 250 River Road, Athens, GA 30602



**Kennesaw State UNIVERSITY**  
 College of the Arts

[www.kennesaw.edu/music](http://www.kennesaw.edu/music)

*The School of Music at Kennesaw State Welcomes:*



**Harry Price**  
 Director, School of Music and  
 Professor of Music and Music Education



**David Kehler**  
 Director of Bands and  
 Associate Professor of Music



**Benjamin Wadsworth**  
 Assistant Professor of Music Theory

Offering the following degrees:

- B.M. in Performance*
- B.M. in Music Education*
- B.A. in Music*

**Audition Dates**

- Friday, October 23, 2009 (All)
- Friday, February 12, 2010 (Voice)
- Friday, February 26, 2010 (Instrumental)
- Friday, March 19, 2010 (Voice)
- Friday, March 26, 2010 (Instrumental)
- Friday, April 2, 2010 (Voice)
- Friday, April 9, 2010 (Instrumental)

For more information contact:  
 College of the Arts Office of Admissions and Student Services  
 770-423-6614 | [COTA-Admissions@kennesaw.edu](mailto:COTA-Admissions@kennesaw.edu)

*flourish with us*



# find YOUR inspiration AT YOUNG HARRIS COLLEGE



## BACHELOR OF ARTS IN MUSIC • SCHOLARSHIPS AVAILABLE

Young Harris College is a private, residential, liberal arts college affiliated with the United Methodist Church and is an accredited institutional member of the National Association of Schools of Music.

**CONTACT:**

Young Harris College Music Department  
PO Box 68, 1 College Street  
Young Harris, GA 30582  
(800) 241-3754 extension 5182  
finearts@yhc.edu • www.yhc.edu

Benny Ferguson, Ph.D.,  
Dean, Division of Fine Arts

Edwin "Sandy" Calloway, D.M.A.,  
Chair, Music Department



© 2009 Young Harris College

# UNIVERSITY of West Georgia

## DEGREE PROGRAMS

### BACHELOR OF MUSIC

*Performance • Music Education • Composition  
BM with Elective Studies in Business  
Jazz Studies & Piano Pedagogy Emphases*

### MASTER OF MUSIC

*Performance • Music Education  
Initial Certification also available*

### MINOR IN MUSIC

## AUDITION DATES

*Sunday, November 15, 2009 • Monday, February 15, 2010*

*Sunday, March 7, 2010 • Saturday, April 3, 2010 • Sunday, May 2, 2010*

*See the Department of Music website for audition and scholarship information: [www.westga.edu/musicdpt](http://www.westga.edu/musicdpt)*

Phone: (678) 839-6516 • Fax: (678) 839-6259 • E-mail: [musicdpt@westga.edu](mailto:musicdpt@westga.edu)

*An accredited institutional member of the National Association of Schools of Music*





Shorter College proudly introduces

*Artist-in-Residence Dr. Jerico Vasquez*



*Acclaimed as a pianist of "intelligent ardor and exceptionally clear and bright technique," Jerico Vasquez has performed in the United States, Canada, Europe, and the Philippines. He studied under Dr. Charles Asche at the University of California, Santa Barbara, and under Ruth Tomfohrde, Abbey Simon and Horacio Gutiérrez in the Moores School of Music at the University of Houston.*

**Audition Dates**

Nov. 11, 2009 (for spring admission) • Dec. 11, 2009  
Jan. 15, 2010 • Feb. 6, 2010 (music only) • April 14, 2010



**Distinctives of the Shorter College Experience**

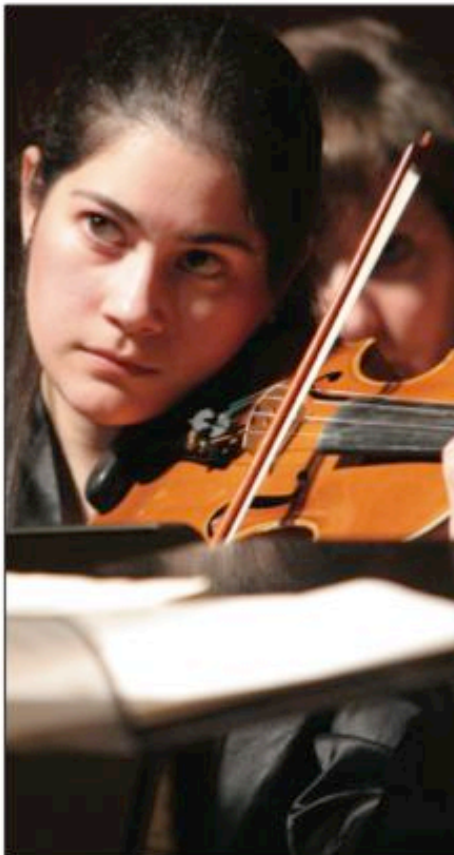
A talented keyboard faculty featuring  
**Mrs. Mary Ann Knight, piano**  
**Dr. Peter DeWitt, organ**  
**Dr. Jerico Vasquez, piano**  
**Mr. Ben Harris, collaborative piano**

Shorter is recognized by the Kawai America Corporation as a Kawai Epic Institution.

*Undergraduate degree programs:  
Performance (Voice, Piano & Organ),  
Piano Pedagogy, Music Education, Church Music,  
Instrumental Music, Musical Theatre, Theatre  
& Visual Arts*

[www.shorter.edu](http://www.shorter.edu)

315 Shorter Avenue, Rome, GA 30165  
706-291-2121 • 800-868-6980  
Contact: Dr. Alan B. Wingard, Dean



**Consider Reinhardt...**

*The Way College Should Be*

Small classes & personal attention  
Experienced & accessible instructors  
Varied performing opportunities  
State-of-the-art facilities

**Degrees Offered**

B.M. Performance  
B.M. Sacred Music  
B.M.E. Music Education  
B.M. Music with business minor  
B.M. music with media arts minor  
Master of Music

**Plan to Audition**

during an Experience Reinhardt  
(Senior Preview Day)

**November 21, 2009**

**January 23, 2010**

**March 13, 2010**

register for Experience Reinhardt at  
[www.reinhardt.edu/admissions](http://www.reinhardt.edu/admissions)



1-87-REINHARDT or 1-877-346-4273 or 770-720-5526  
[www.reinhardt.edu](http://www.reinhardt.edu)

Kawai EPIC partner & NASM accredited

GEORGIA STATE UNIVERSITY 

**SCHOOL of MUSIC**

[www.music.gsu.edu](http://www.music.gsu.edu)

**VOICE PERFORMANCE /  
OPERA STUDIES**

**Kathryn Hartgrove** *Voice Coordinator / Mezzo-Soprano*

**Richard Clement** *Tenor*

**W. Dwight Coleman** *Baritone*

**Kay Paschal Freeman** *Opera Studies*

**Magdalena Moulson** *Soprano*

**Sharon Stephenson** *Soprano*



**KEYBOARD STUDIES**

**Geoffrey Haydon** *Keyboard Studies Coordinator /  
Piano Performance / Jazz Piano*

**Brandt Fredriksen** *Piano Performance /  
Chamber Music*

**Sergio Gallo** *Piano Performance/Pedagogy*

**Peter Marshall** *Coordinator of Accompanying*

**Sarah Martin** *Organ Performance*



**Georgia State University School of Music**  
404-413-5900 • P.O. Box 4097, Atlanta, GA 30302  
W. Dwight Coleman, Director • Robert J. Ambrose, Associate Director  
Steven Harper, Graduate Director

Georgia Southern University  
*Department of Music*

**PIANO**

Conservatory style learning  
in a Liberal Arts atmosphere

*Our faculty...*



Dr. David Murray



Dr. Karla Qualls



Dr. Richard Mercier



Dr. Susan Thomson



Dr. Tom Pearsall

For more information, visit [www.gorgiasouthern.edu/piano](http://www.gorgiasouthern.edu/piano) or call 912-478-5019





COLUMBUS STATE UNIVERSITY'S



Saunders Center for Music Studies

4225 University Avenue  
Columbus, GA 31907-5645  
phone: 706.649.7225  
schwobmusic@colstate.edu  
MUSIC.COLSTATE.EDU

DEGREE PROGRAMS

BACHELOR OF ARTS  
BACHELOR OF MUSIC  
PERFORMANCE  
MUSIC EDUCATION  
PIANO PEDAGOGY  
MUSIC TECHNOLOGY

MASTERS OF MUSIC IN  
MUSIC EDUCATION

ARTIST DIPLOMA

AUDITION DATES

NOVEMBER 21, 2009  
FEBRUARY 12, 2010  
MARCH 20, 2010

2008-2009 University System of Georgia Board of Regents Teaching Excellence Award  
for Departments and Programs



Greater Marietta  
Music Teachers

PAM BARKSDALE PRESIDENT  
770-401-4828

Music at Georgia College  
Milledgeville, Georgia

*Look at what we have to offer!*

While working toward any of the following degrees offered at Georgia College, students have the opportunity to participate in performing groups, study and perform with world-class guest artists, and join any number of professional music organizations.

**Bachelor of Arts in Music**

- Composition
- General
- Performance

**Bachelor of Music Ed**

- Choral
- Elementary
- Instrumental

**Master of Music Ed**

Assistantships Available  
**contact** Dr. Patti Tolbert  
patti.tolbert@gcsu.edu

**Bachelor of Music Therapy**

**contact** Dr. Chesley Mercado  
chesley.mercado@gcsu.edu

**Master of Music Therapy**

Financial Aid and Scholarships are available.

**SCHOLARSHIP/ENTRANCE AUDITION DATES:**

Friday, February 15, 2010      Friday, March 5, 2010  
Application Deadline: February 5      Application Deadline: February

Students may request an application form by mail or by calling the Department of Music at (478) 445-8289. They may also apply at:

[www.gcsu.edu/music](http://www.gcsu.edu/music)



Compliments of

**CMTA**

Cherokee Music Teachers Association

Cobb County Music Teachers Association

*Changing lives through music!*

ccmta.com

President: Joy Poole      jbpoole@comcast.net  
 Membership: Nancee McCraw      Nancee@musician.org

SMAMTA

ATLANTA  
 FULTON  
 COWETA  
 CLAYTON  
 HENRY  
 FAYETTE

TEACHERS ASSOCIATION  
 S E R V I N G  
 5 Counties

Compliments of

Decatur Music Teachers Association

**DMTA**

Serving Decatur, Stone Mountain, Conyers and the surrounding area

Glen Eckman, president      Kay Brown, v.p. for membership  
 678-937-1481      404-292-0379  
 gleneckman@yahoo.com      donkay7@gmail.com

Gwinnett County Music Teachers Association

Lois Simon      Bonnie Bowen  
 President      Membership  
 770-277-6659      770-963-9319

www.GCMTA.org

IF YOU ARE SERIOUS ABOUT GREAT MUSIC,  
 THEN CLAYTON STATE'S DEPARTMENT OF MUSIC  
 IS SERIOUS ABOUT YOU!

Clayton State University offers the following programs:

**BACHELOR OF ARTS IN MUSIC**  
**BACHELOR OF MUSIC**

- COMPOSITION • MUSIC EDUCATION
- PERFORMANCE

**2009 AUDITIONS & PERFORMANCES**  
 Auditions for admittance for Fall 2009 semester will be held on:

Saturday, February 21 • 9 am  
 Saturday, April 18 • 9 am  
 Tuesday, June 16 • 9 am  
 Friday, August 7 • 9 am

CSU Opera • March 27 & 28  
 CSU Wind Ensemble • April 15 | 7:30 pm  
 CSU Chorale • April 19 | 3 pm

All Clayton State University ensemble performances take place at SPIVEY HALL.

To learn more, call (678) 466-4750 or visit our Web site: <http://a-s.clayton.edu/music/>





**North DeKalb**  
**Music Teachers Association**  
"Friendly Faces Make Harmonious Phrases"

Kathleen Ackermann, *President*  
770-451-5159  
crosstownjazz@bellsouth.net

Chiu-May Yu, *V.P. Membership*  
770-938-7619  
chiumayyu@hotmail.com

www.ndmta.com



*North Fulton*  
*Music Teachers Association*

---

People and Music in Harmony

Maria Kransmo  
President

Julie Soh-Harbin  
VP of Membership



**HALEY & ASSOCIATES**

A PROFESSIONAL CORPORATION  
CERTIFIED PUBLIC ACCOUNTANTS

SUITE 100  
2001 MONTREAL ROAD  
TUCKER, GEORGIA 30084

ED HALEY, CPA  
JUDY MCKAIN, CPA

TELEPHONE (770) 938-0904  
FAX (770) 723-0888

August 4, 2009

Georgia Music Teachers Association, Inc.  
956 Green Knoll Drive  
Dacula, GA 30019

We have compiled the accompanying comparative statements of financial position of Georgia Music Teachers Association, Inc. (a Georgia non-profit corporation) as of June 30, 2009 and 2008, and the related comparative statements of activities and cash flows for the years then ended, in accordance with Statements on Standards for Accounting and Review Services issued by the American Institute of Certified Public Accountants.

A compilation is limited to presenting in the form of financial statements information that is the representation of management. We have not audited or reviewed the accompanying financial statements and, accordingly, do not express an opinion or any other form of assurance on them.

Management has elected to omit substantially all of the disclosures required by generally accepted accounting principles. If the omitted disclosures were included in the financial statements, they might influence the user's conclusions about the Company's assets, liabilities, and fund balance. Accordingly, these financial statements are not designed for those who are not informed about such matters.

We are not independent with respect to Georgia Music Teachers Association, Inc.

*Haley & Associates, P.C.*



GEORGIA MUSIC TEACHERS ASSOCIATION, INC.  
COMPARATIVE STATEMENTS OF FINANCIAL POSITION  
JUNE 30, 2009 AND 2008

ASSETS		
	2009	2008
ASSETS:		
Unrestricted cash in bank and savings	\$ 68,395	\$ 63,736
Restricted cash in banks and CD's	22,233	21,265
Property and equipment, net of \$3,460 and \$2,886 accumulated depreciation	994	1,568
<b>TOTAL ASSETS</b>	<b>\$ 91,622</b>	<b>\$ 86,569</b>

LIABILITIES AND NET ASSETS		
LIABILITIES:		
Prepaid income	\$ 13,598	\$ 13,788
<b>TOTAL LIABILITIES</b>	<b>13,598</b>	<b>13,788</b>
NET ASSETS:		
Unrestricted	55,791	51,516
Permanently restricted	22,233	21,265
<b>TOTAL NET ASSETS</b>	<b>78,024</b>	<b>72,781</b>
<b>TOTAL LIABILITIES AND NET ASSETS</b>	<b>\$ 91,622</b>	<b>\$ 86,569</b>

GEORGIA MUSIC TEACHERS ASSOCIATION, INC.  
COMPARATIVE STATEMENTS OF ACTIVITIES  
FOR THE YEARS ENDED JUNE 30, 2009 AND 2008

	2009	2008
UNRESTRICTED NET ASSETS:		
SUPPORT, REVENUES, GAINS, AND RECLASSIFICATIONS		
GMTA dues	\$ 26,935	\$ 26,725
Advertising - newsletter	6,085	8,077
Advertising - directory	2,396	3,184
Auditions	21,620	19,753
Conference	16,005	15,904
Labels	75	150
Net investment return	1,055	1,309
Contributions	120	110
<b>TOTAL</b>	<b>74,291</b>	<b>75,212</b>
EXPENSES		
Auditions	16,064	15,353
Accounting	1,100	1,050
Convention	13,402	11,841
Executive Sec./Treas. compensation and taxes	23,380	25,660
Office	5,447	5,581
Website expense	530	2,376
Newsletter	1,031	1,138
Directory	3,347	3,514
Travel - President	1,961	2,319
Travel - Student grants	2,860	2,825
Contributions	120	110
Depreciation	574	600
Miscellaneous	200	134
<b>TOTAL</b>	<b>70,016</b>	<b>72,501</b>
Change in unrestricted net assets	4,275	2,711
PERMANENTLY RESTRICTED NET ASSETS		
Investment income, net of investment expenses	1,058	1,196
Contributions	985	1,445
Awards paid	(1,075)	(905)
Change in permanently restricted net assets	968	1,736
<b>CHANGE IN NET ASSETS</b>	<b>5,243</b>	<b>4,447</b>
NET ASSETS AT BEGINNING OF YEAR	72,781	68,334
NET ASSETS AT END OF YEAR	<b>\$ 78,024</b>	<b>\$ 72,781</b>

See accountants' compilation report

GEORGIA MUSIC TEACHERS ASSOCIATION, INC.  
COMPARATIVE STATEMENTS OF CASH FLOWS  
FOR THE YEARS ENDED JUNE 30, 2009 AND 2008

	2009	2008
CASH FLOW PROVIDED BY OPERATING ACTIVITIES:		
Increase in net assets	\$ 5,243	\$ 4,447
Adjustments to reconcile increase in net assets to net cash provided by operating activities:		
Add: Depreciation, a non-cash expense	574	600
Increase (decrease) in accounts payable	(190)	(950)
(Decrease) in prepaid income	(190)	(3)
Net cash provided by operating activities	<u>5,627</u>	<u>4,094</u>
CASH FLOW USED BY INVESTING ACTIVITIES:		
	-	-
<b>INCREASE IN CASH</b>	<b>5,627</b>	<b>4,094</b>
CASH AT BEGINNING OF YEAR	<u>85,001</u>	<u>80,907</u>
<b>CASH AT END OF YEAR</b>	<b>\$ 90,628</b>	<b>\$ 85,001</b>
SUPPLEMENTAL INFORMATION		
Interest expense	\$ -	\$ -
Income tax expense	\$ -	\$ -

See accountants' compilation report

**Administrative Committee**

President: Edith Sweatman, 420 Harlem-Grovetown Rd., Harlem, GA 30814 ([ejs@sweatman.us](mailto:ejs@sweatman.us))  
 President-Elect: Keith DeFoor, P.O. Box 65, Young Harris, GA 30582 ([Kdefoor@yhgc.edu](mailto:Kdefoor@yhgc.edu))  
 Executive Director: Donna Trivette, 956 Green Knoll Drive, Dacula, GA 30019 ([donnatrivette@bellsouth.net](mailto:donnatrivette@bellsouth.net))  
 Vice-President/Program: Dawn McCord, University of West GA, 1601 Maple Street, Carrollton, GA 30118 ([dmmcord@westga.edu](mailto:dmmcord@westga.edu))  
 Vice-President/Membership: Donna Dasher, 32 Magnolia Marsh Dr., Richmond Hill, GA 31324 ([Dsdasher39@comcast.net](mailto:Dsdasher39@comcast.net))  
 Vice-President/Newsletters: Jane Lester, 1031 Holly Point Way, Watkinsville, GA 30677 ([jlpiano@bellsouth.net](mailto:jlpiano@bellsouth.net))  
 Vice-President/GMTA Auditions: Rebekah Jones, 141 North Church St., Bogart, GA 30622 ([rebekahhealan@yahoo.com](mailto:rebekahhealan@yahoo.com))  
 Vice-President/MTNA Competitions: Peggy Lee, 275 Sandstone Drive, Athens, GA 30605 ([peggyklee@bellsouth.net](mailto:peggyklee@bellsouth.net))  
 Secretary: Joy Poole, 912 Evian Drive, Kennesaw, GA 30152 ([jbpoole@comcast.net](mailto:jbpoole@comcast.net))  
 Members-At-Large: Fred Hsiang, 480 Barnesley Lane, Alpharetta, GA 30022 ([shinvinc@yahoo.com](mailto:shinvinc@yahoo.com))  
 David Watkins, 1000 Chastain Road, Kennesaw, GA 30144 ([dwatkins@kennesaw.edu](mailto:dwatkins@kennesaw.edu))  
 Immediate Past President: Martha Thomas, 155 Knob Lick Drive, Athens, GA 30605 ([mlthomas@uga.edu](mailto:mlthomas@uga.edu))

**Committee Chairs**

Archivist: Margaret Liu ([mliumusic@mindspring.com](mailto:mliumusic@mindspring.com))  
 Arts Awareness: Diane Boyd ([dianelboyd@comcast.net](mailto:dianelboyd@comcast.net))  
 Certification: Jan Adams ([jadams9800@bellsouth.net](mailto:jadams9800@bellsouth.net))  
 College Faculty: Kevin Hampton ([Kevin.Hampton@armstrong.edu](mailto:Kevin.Hampton@armstrong.edu))  
 Collegiate Chapters: Pete Jutras ([pjutras@uga.edu](mailto:pjutras@uga.edu))  
 Concerns: Betty White ([bettypiano@comcast.net](mailto:bettypiano@comcast.net))  
 Finance/Advisory: Martha Thomas ([mlthomas@uga.edu](mailto:mlthomas@uga.edu))  
 GMTA Awards: Julie Soh-Harbin ([juliesohharbin@yahoo.com](mailto:juliesohharbin@yahoo.com))  
 IMTF: Paula Thomas Lee ([ptl@reinhardt.edu](mailto:ptl@reinhardt.edu))  
 MTNA Foundation: Becky Bradley ([beckyb9@hotmail.com](mailto:beckyb9@hotmail.com))  
 Piano Judges List: Barbara Korzan ([bkkorzan@knology.net](mailto:bkkorzan@knology.net))  
 Technology: Joe Lozier ([joe@lozierstudio.com](mailto:joe@lozierstudio.com))  
 Theory: Jason Bennett ([bennettmusic@mac.com](mailto:bennettmusic@mac.com))

**Local Association Presidents:**

Athens: Jason Bennett ([bennettmusic@mac.com](mailto:bennettmusic@mac.com))  
 Atlanta: Mary Williams ([mary@marywilliamspianostudio.com](mailto:mary@marywilliamspianostudio.com))  
 Augusta: Catharine McClure ([cmclure@knology.net](mailto:cmclure@knology.net))  
 Cherokee: Suzanne Hosea ([suzannehosea@bellsouth.net](mailto:suzannehosea@bellsouth.net))  
 Cobb County: Joy Poole ([jbpoole@comcast.net](mailto:jbpoole@comcast.net))  
 Columbus: Martha Aguirre ([AguirreMV@aol.com](mailto:AguirreMV@aol.com))  
 Coweta-Fayette: Mary Jane Server ([maryjaneserver@hotmail.com](mailto:maryjaneserver@hotmail.com))  
 Decatur: Glen Eckman ([glneckman@yahoo.com](mailto:glneckman@yahoo.com))  
 Golden Isles: Donna Nilsson ([Nilsson.music@comcast.net](mailto:nilsson.music@comcast.net))  
 Greater Marietta: Pam Barksdale ([pamlbark@bellsouth.net](mailto:pamlbark@bellsouth.net))  
 Gwinnett County: Janet Will ([jwill2@bellsouth.net](mailto:jwill2@bellsouth.net))  
 Macon: Barbara Probst ([nolebarb@bellsouth.net](mailto:nolebarb@bellsouth.net))  
 North Dekalb: Kathy Ackerman ([crosstownjazz@bellsouth.net](mailto:crosstownjazz@bellsouth.net))  
 North Fulton: Maria Kransmo ([mkransmo@earthlink.net](mailto:mkransmo@earthlink.net))  
 Northeast Georgia: Keith DeFoor ([kdefoor@yhgc.edu](mailto:kdefoor@yhgc.edu))  
 Rome: Helen Ramsaur ([hramsaur@yahoo.com](mailto:hramsaur@yahoo.com))  
 Savannah: Kelli Horton ([88keyspianostudio@gmail.com](mailto:88keyspianostudio@gmail.com))  
 South Georgia: Janet R. Robinson ([robinsjanet@gmail.com](mailto:robinsjanet@gmail.com))  
 South Metro: Grace Caudle ([gnotes@earthlink.net](mailto:gnotes@earthlink.net))  
 Western Georgia: Rachel Griffin ([griffingirl81@yahoo.com](mailto:griffingirl81@yahoo.com))

**Membership**

The Georgia Music Teachers Association (GMTA) is a member of the Music Teachers National Association (MTNA) and memberships are jointly held in both organizations. Members receive subscriptions to The American Music Teacher, GMTA newsletter and the GMTA Directory. Membership is open to individuals professionally engaged in any field of musical activity and dues should be sent to MTNA, 441 Vine Street, Suite 3100, Cincinnati, Ohio 45202-3004. MTNA is available toll-free at 1-888-512-5278 to answer your questions regarding membership dues or on the web at [www.mtna.org](http://www.mtna.org)

**Notice**

The GMTA Newsletter is an information journal focusing on matters directly related to MTNA, GMTA and local associations only. It does not promote the studios of individual teachers or institutions by publishing articles regarding the accomplishments

of teachers, students, or an institutions' activities. Paid advertising is available for this purpose. GMTA expressly reserves the right to refuse publication of any article photograph, or advertisement contrary to the objectives of MTNA or the Associations. All articles are subject to editing due to size or content.

### **Advertising**

Limited advertising space is available for firms or individuals who have a product or service of specific interest or benefit to GMTA members. All correspondence regarding advertising should be sent to the Executive Director Donna Trivette by fax (770) 237-8845 or by email [donnatrivette@bellsouth.net](mailto:donnatrivette@bellsouth.net)

### **Submittals**

GTMA publishes its online newsletter three times per year. Publication dates and their respective deadlines are as follows:  
January 15th (Deadline: November 30th)  
June 15th (Deadline: May 1st)  
September 15th (Deadline August 1st)

### **Editors**

Jane Lester, VP Publicity | 1031 Holly Point Way Watkinsville, GA 30677 | [jlpliano@bellsouth.net](mailto:jlpliano@bellsouth.net)  
Edith Sweatman, GMTA President | 420 Harlem Grovetown Rd Harlem, GA 30814 | [ejs@sweatman.us](mailto:ejs@sweatman.us)  
Jonathan Klein, VP Publicity | 170 Woodstone Dr. Athens, GA 30605 | [jonathanfk@gmail.com](mailto:jonathanfk@gmail.com)

